

WOTCHi

THE SMARTWATCH

DM70

Please read this manual carefully before using the product and keep it properly.

Package contents: watch (including strap)
DM70, charger DM70,
DM70 product manual

DM70

Product description



Product introduction

Thank you for choosing our smart watch. You can read this manual to get a comprehensive understanding of how to use the device. The device connects to a mobile phone through Bluetooth for adaptive use, provides a variety of practical functions and services, and has developed many functions for human sports and health. This device is not a medical device, and the measurement data and results are for reference only, not as a basis for diagnosis and treatment. The Company reserves the right to modify the contents of this manual without prior notice.

This product supports IP68, rain, hand washing and other wear without worry, after soaking in water, there will be water in the horn hole, please shake the water out, the sound can return to normal, and dry via soft cloth before the operation of the watch.

Note: During hot shower or sauna, should not be worn to prevent vapors. If the watch is damaged by water because of not following the instructions, the company does not make a free warranty.



BT Disconnection

In FitCloudPro, click "Unbind" on the "Device" interface of the APP to unbind the watch. After the APP is unbound, manually enter the Bluetooth connection interface of the mobile phone again, find the name of the paired watch and click "Unpair" (click "Ignore Device" in IOS) to finish the complete unbind.

Charging Manual

1. The battery icon of the watch will become red when the battery capacity is less than 20%, the OS will automatically turn off the motor vibration function. If the power saving mode is enabled, the watch will turn off the BT, reduce the brightness to the lowest, turn off the raise to wake, turn off the automatic detection of heart rate, vibration motor and other functions.

2. The watch charging needs to use 5V power adapter and it is required to be 5V 500MA or 5V 1A. When the magnetic charging base is aligned with the charging part of the watch, the watch will automatically attract the charging base. When charging, the watch will be prompted by the charging interface, and the charging icon will be stationary after being fully charged.

3. Because the charging base is magnetic, it's easy to absorb other conductive metal objects, please timely close the power adapter after the completion of charging, pay attention to the magnetic base and do not touch other metal objects or be adsorbed on the metal objects, so as to avoid short circuit.

App installation

You can use the "scan" function in WeChat or browser to scan the "QR code" of the watch and download and install FitCloudPro. You can also download and install FitCloudPro by searching for FitCloudPro in App store, Google Play Store, etc.



Watch Connection

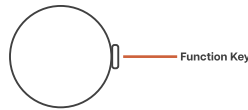
QR code connection

After you open the APP, if the dialog box for obtaining permission pops up on the mobile phone, please click Allow to obtain. In the "Device" interface of the APP, click "Add Peripheral now" and select the "Scan" function in the upper right corner of the "Binding Device" interface. The mobile phone can scan the QR code in the "Settings" of the watch. During the pairing process, the connection confirmation button will pop up on the watch and mobile phone. Please click "Allow pairing" to complete the pairing.

Manual connection

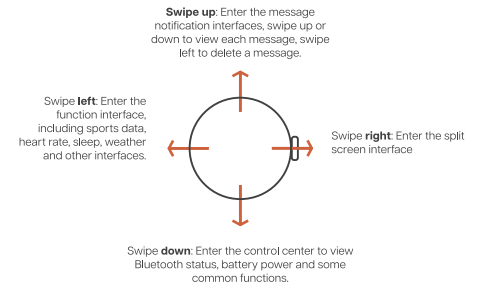
After opening mobile phone Bluetooth, open FitCloudPro and click on the "Device" interface and click on the "Add Peripheral now" and search the nearby Bluetooth in the binding device interface, you just need to find the name of the watch (models), click to enter matching, during the matching process, watch and the mobile phone and connection confirmation button will pop up on the watch and mobile phone. Please click "Allow pairing" to complete the pairing. When you finish the above operations, slide down on the watch face, you will see the color change of the "Bluetooth" icon, and confirm the Bluetooth status through different icons.

Key Manual



Function key:

1. Long press the button for 4 seconds to power on or power off
2. Press one time to enter the main menu on watch face
3. Quickly press two times to switch the main menu to different styles on main menu
4. Short press to return the watch face



Q&A

1. Sleep data is not accurate enough
A. Sleep monitoring simulates people's natural sleep and wake up time, so it needs to be worn normally.
B. If you wear it too late or when you fall asleep, errors may occur.
C. Sleep data is not monitored during the daytime, the default sleep monitoring period is 9-30 p.m. to 12-00 a.m. the next day.
2. BT is not connected or cannot be connected
A. Restart the watch and reconnect.
B. Please try to restart the mobile phone BT and connect again.
C. Do not connect the mobile phone to other BT devices at the same time. Try to connect the mobile phone again after untying other devices.
3. Inaccurate measurement of heart rate/blood oxygen
A. Generally, when measuring, it is caused by poor contact between watch sensor and wrist.
B. Please pay attention to the full contact between the sensor and the wrist during measurement.
C. For people with darker skin and hairy arms, please go to the App to open [Devices-Enhanced measurement].

WOTCHi

THE SMARTWATCH

